

WEEKLY BULLETIN

21 August 2017



People working to extract sand from the river bed in Budhasing VDC, Nuwakot. Photo credit: Bronwyn Russel/CFP.

UPDATES & REQUESTS

Flood Response

[MoHA Press Release, 18 August](#): informed of cabinet decision to provide cash, for purchasing food, to people affected by floods/landslides in a single installment at the rate of 70 NPRs per person per day for 30 days. The affected people who are eligible for this support will be identified by the relevant DDRCs. 1000 million NPRs has been released to MoHA/CNDRC from the Prime Minister's Disaster Relief Fund to cover the distribution of the cash support.

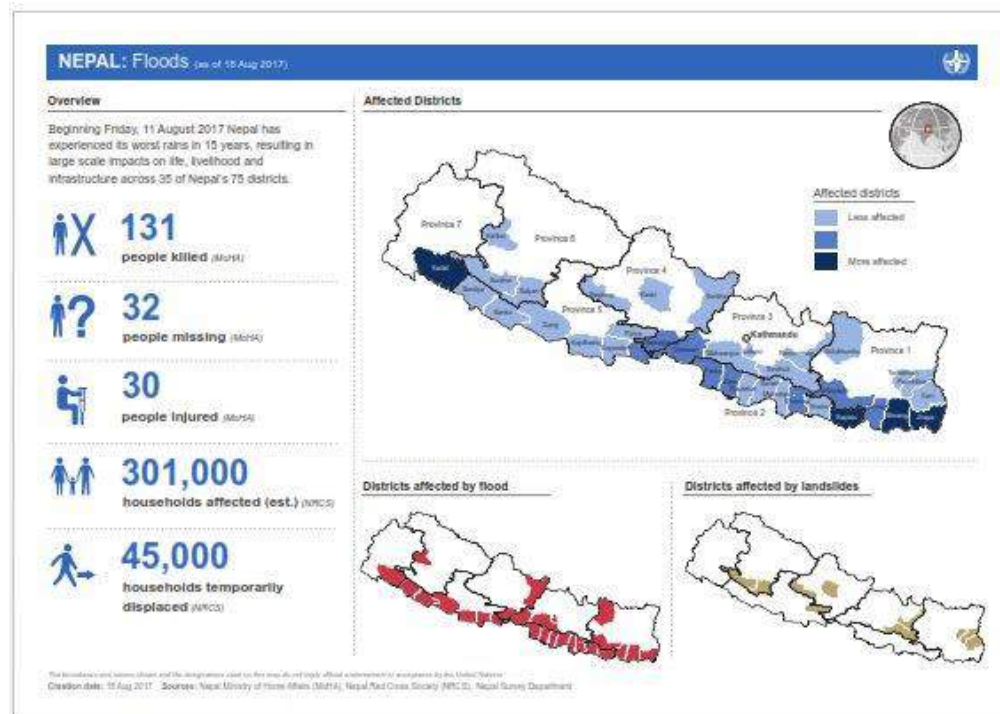
[Government of Nepal, Department of Hydrology and Meteorology, Flood Forecasting Section, Rainfall Watch](#)

[Government of Nepal, Meteorological Forecasting Division, Monsoon Updates \(Nepali\)](#)

[ICIMOD Regional Flood Outlook](#)

[Interactive Map of Reported Number of Nepal Flood Deaths, Houses Damaged, and Cattle Loss, Code for Nepal](#)

UN Resident Coordinator's Office (RCO): Situation Report [1 \(14 August\)](#), [2 \(16 August\)](#), [3 \(18 August\)](#). The UN RCO is applying to the [Central Emergency Response Fund \(CERF\)](#) for funding to support the flood response. Non-UN agencies may apply but must be subcontracted through UN agencies.



UN RCO Flood Impacts Infographic, 18 August

[Shelter Cluster: 16 August update](#), 16 August Supply, Shelter, and Rehabilitation subcommittee [meeting minutes](#), [contact details for DUDBC division offices](#), [17 August update](#), 18 August national cluster [meeting minutes](#) and [presentation](#)

[WASH Cluster Flood Response Google Drive](#)

[CCCM Cluster, National Cluster Meeting 15 August](#)

[Logistics Cluster Access Constraints Map – 15 August, Access Constraints Map – 17 August](#)

[Cash Coordination Group: WFP flood update 14 August, Note-for-the-Record](#) AIN and Hon Minister for Women, Children, and Social Welfare meeting 16 August, [meeting minutes 18 August, WFP flood update 18 August](#)

[Nepal Red Cross Society: Situation Report 13 August, 14 August, 15 August, 16 August, 17 August, 18 August, 19 August, 20 August](#)

[HERD International: Media Monitoring 14 August, 15 August, 16 August, 17 August, 18 August](#)



Flooding in Saptari. Photo credit: Abdes Kuma Jha.



Flooding in Banke. Photo credit: Bhisma Lodh.



Residents of Taghandubba, Jhapa, try to pull an electricity pole back up after it had been brought down by flooding.
Photo credit: Shubhanga Pandey.



Ghanmaya Ghorsane and her daughter Kamala, from Baluwatar, Jhapa, were woken up by her son on Friday midnight. Fearing the collapse of their home, the three left together, holding one another's hand. But only the son made it. Ghanmaya's body was found the next day about 2 kilometers from where the three got separated. Kamala is still missing. Photo credit: Shubhanga Pandey.

Photos sourced from The Record's Nepal Floods [live blog](#).

National

[NRA Radio 'Jingle', Tranche Disbursement Deadlines:](#) Partner Organisations (POs) have been requested to support with disseminating this jingle via local radio stations in the districts. In Gorkha, CARE and UNDP will support playing of the 'jingle' a minimum of twice per day on 6 radio stations in Gorkha until 15 November 2017. Oxfam have also agreed to play the 'jingle' as part of their regular radio programme on Radio Gorkha. Other POs are looking into options to support the playing of the 'jingle' beyond 15 November 2017. Similar support is being sought from POs in other districts. HRRP

recognises that the tranche disbursement deadlines are challenging and may lead to vulnerable households struggling even further with their reconstruction. HRRP is scaling up research into what leads to compliance, and what the blocks are in reconstruction progress, in order to provide some recommendations to partners on how to scale up appropriate socio-technical assistance in an effort to push towards this deadline and make sure that it does not lead to households being left behind.

Seminar on ‘Dissemination of Research Findings on Masonry Buildings and Interaction on Establishing Testing Facilities in Nepal’, 21 August: the event was jointly organised by NRA and DUDBC, with support from IoE and NSET, and was chaired by Dr. Hari Ram Parajuli, NRA Executive Committee Member for housing.

Inspection Forms for Completed Houses: published by NRA, these forms are specifically for cases where inspection takes place after the house has been fully completed. Forms are available for [RCC \(Ka and Kha\)](#), [stone and mud masonry](#), [stone and cement masonry](#), [brick and mud masonry](#), [brick and cement masonry](#), and [RCC \(GA\)](#).

NRA GESI Specialist: with support from USAID, NRA will be hiring a specialist for up to 18 months to help mainstream GESI within the policies and practices of the NRA. More details are available in the [ToR for the position](#), and interested applicants should submit their CV and a cover letter to Jennifer Hogan, HoganJ@cdmsmith.com. Please note that fluency in Nepali is required for this position.

MoFALD CLPIU Enrolment Data, Published 16 August (Nepali)

S.N.	Districts	No. of Eligible HHs	No. of beneficiaries added after grievances redressal	Total no. of beneficiaries	No. of HHs with grant agreement	No. of HHs received 1st tranche			No. of HHs received 2nd tranche			No. of HHs received 3rd tranche			No. of grievances registered	No. of grievances cleared	No. of beneficiaries eligible for retrofitting grant		
						GoN	I/NGO	Total	GoN	I/NGO	Total	GoN	I/NGO	Total					
1	2	3	4	5	6	7			8			9			10	11	12		
Cluster 1- Highly affected 14 Districts																			
1	Sindhupalchok	78537	1380	79917	75304			75191						6550		169		376	
2	Okhaldhunga	19819	346	20165	18701			18644						3405		2		1643	
3	Nuwakot	65773	3511	69284	62740	59825	2841	62666	7215	936	8151		283	283				936	
4	Ramechhap	43609	1369	44988	41861	40580	1279	41859	5032	573	5605		241	241	14005		13424	2149	
5	Dolakha	51940	349	52289	48569	45363	1679	47042	8331	1002	9333	106	522	628	24379		23883	637	
6	Gorkha	58503		60815	54521			54521						6800		0		2019	
7	Dhading	70581	5104	75685	65886	65465		65465	3649					3649		0	16401	15651	1494
8	Kavrepalanchok	67731	4480	72211	63870	61496	2374	63870	4904	343	5247	15	64	79	23919		19631	2415	
9	Rasuwa	11236	393	11629	10495	8758	1023	9781	876	590	1466		444	444	1418		1288	117	
10	Sindhuli	34269	19	34288	30216	29299	860	30159	2088	408	2496		182	182	28627			2408	
11	Makwanpur	30238	1477	31715	22610	20630	1346	21976	1550	818	2368		577	577	23961		18072	4150	
12	Kathmandu	42500	2795	45295	35951	35383	107	35490	658		658			0	11813		9941	575	
13	Lalitpur	25892	57	25949	21235	19513	701	20214	356	441	797		272	272	7004		5882	667	
14	Bhaktapur	26066	1500	27566	21639	20799		20799	87		87			87		0	6320	6093	280
Sub-total		626694	22780	651796	573598	407111	12210	567677	34746	5111	56612	121	2585	2877	157847		113865	19866	
Cluster 2 - Less affected 17 Districts																			
1	Sankhuwasabha	1953		1953	1583	1201		1201			0							326	
2	Bhojpur	5749		5749	1754	1537		1537			0							453	
3	Dhankuta	2796		2796	2089	2089		2089			0							70	
4	Khotang	8443		8443	7200	7200		7200			0							253	
5	Solukhumbu	10794		10794	8095	514		514			0							456	
6	Chitwan	7335		7335	4000	1426		1426			0							593	
7	Nawalparasi	872		872	605	502		502			0							8	
8	Tanahu	13821		13821	5000	2350		2350			0							466	
9	Lamjung	13519		13519	9162	4295	195	4490		75	75							539	
10	Baglung	2375		2375	1107	1109		1109			0							82	
11	Syangja	8549		8549	5342	2844		2844			0							567	
12	Palpa	4652		4652	2500	1563		1563			0							384	
13	Parbat	5269		5269	4138	4070		4070			0							417	
14	Gulmi	4144		4144	2877	2068		2068			0							195	
15	Kaski	6026		6026	1770	1770		1770			0							242	
16	Arghakhachi	1036		1036	582	17		17			0							67	
17	Myagdi	868		868	645	645		645			0							7	
Sub-total		98201		98201	58449	35200	195	35395	0	75	75	0	0	0	0	0	0	5125	
Total		724895	22780	749997	632047	442311	12405	603072	34746	5186	56687	121	2585	2877	157847		113865	24991	

Lists of eligible households by VDC, 14 most affected districts, MoFALD CLPIU

NRA 5W Reporting: to date 144 out of 148 (97%) POs have reported to the NRA 5W. POs who have already reported should have received their login details for the online MIS project reporting system. The [user manual](#) provides full details on how to use this system and POs can contact Gaurab Pradhan (gaurab@hrrpnepal.org) if further information is required. Once the NRA 5W is fully up and running the HRRP 4W will be phased out.

Districts

HRRP District Orientation on Confined Masonry, Dry Stone Masonry, and Bamboo Treatment Process: orientations have been conducted in [Kavrepalanchok](#), [Kathmandu Valley](#), [Dolakha](#), Gorkha, Ramechhap, Makwanpur, and Sindhuli. The orientation in Okhaldhunga is taking place today. The orientations in Dhading, Okhaldhunga, and Sindhupalchok are taking place today (21 August). The orientation in Rasuwa will take place during the 4th week of August. The orientations also include a session on the MoUD CLPIU/DLPIU monitoring and evaluation process. Please contact the relevant [HRRP district coordination team](#), or Laxmi Bhatta, HRRP National Technical Coordination Officer, techofficer2.national@hrrpnepal.org for more information.

Training Opportunity for Partner Organisations (POs), Baliyo Ghar Training on Social Mobilisation for Reconstruction: NSET, through USAID funding for the Baliyo Ghar programme, will be offering training to POs staff in Dhading, Nuwakot, and Dolakha during September and October. The training programme is a five day residential course. Partners are requested to submit names of interested participants, using the standard [format](#), to Pramod Khatiwada for Dhading, pkhatiwada@nset.org.np, Achyut Paudel for Dolakha, apaudel@nset.org.np, and Ayush Baskot for Nuwakot, abaskota@nset.org.np.

[HRRP District Coordination Team Ramechhap, Weekly District Report, 11-17 August 2017](#)



Rampur-7, Single Room House, proper band provided, Nepal Red Cross Society, Model House

[HRRP District Coordination Team Rasuwa, Weekly District Report, 11-17 August 2017](#)



New Chief District Officer, Mrs. Hira Devi Paudel, welcomed by the Assistant CDO at Rasuwa

[HRRP District Coordination Team Sindhuli, Weekly District Report, 11-17 August 2017](#)



Kapilakot-5, Sindhuli, Stone Masonry with Mud Mortar, Bands provided

[Migration in a microcosm:](#) Nepali Times report on the impacts of migration in Tangting Village, 20 km from Pokhara.

Requests for Partner Support

[Flood Response Reporting, Nepal Shelter Cluster:](#) Partner Organisations (POs) assisting the shelter response in any of the flood affected districts are requested to report their activities to the Nepal Shelter Cluster. The completed reporting

templates should be shared with Deepika Bhardwaj, Shelter Cluster Officer, Deepika.BHARDWAJ@ifrc.org. [Updated information on stockpiles of emergency supplies](#) has also been shared by DUDBC. POs are requested to send any information on stockpiles or emergency funds not included to Deepika Bhardwaj.

Flood Response, Cash Coordination Group, Reporting Capacity of Partner Organisations to Make Cash Payments: detailed information is requested from partners as follows:

No.	District	Beneficiary Category	Est. Number of HH/beneficiaries	Value of each cash Payment	Number of payments	Interval between payments if more than one	Conditional or unconditional
1							

As there is often a degree of uncertainty, conditionality, and flexibility built into plans for cash payments partners may add a paragraph of text if that clarification is necessary or useful. To submit the requested information, and for further clarification, please contact Iain McDonald, CCG Co-Chair, iain.mcdonald@wfp.org.

Support for Inspection Data Entry: partner support is requested for inspection data entry at district level. The data from the hard copy inspection forms at district level needs to be entered into the NRA MIS. Support is required for up to 6 weeks depending on the backlog of data in the district. Partners able to provide support are requested to contact either Gaurab Pradhan, HRRP Senior IM Officer, gaurab@hrrpnepal.org, or the relevant [HRRP District Coordination Team](#).

ALNAP State of the Humanitarian System (SOHS) Survey: The SOHS takes stock of how the humanitarian system is performing. The more responses received from humanitarians on the ground and host governments, the more accurate the survey will be.

Call for participants, 3 day specialised course on seismic safety of buildings, 9-11 October: this training programme, jointly developed by IOE, NSET, ESS, NORSAR, British Columbia Institute of Technology (BCIT), and the Indian Institute of Technology (IIT) Roorkee, is targeted to design professionals in the field of structural and geotechnical engineering. The course will be focused on earthquake engineering in Nepal. The deadline for applying to take part is 8 September More details are available in the [course brochure](#) and on the [NSET website](#).

UN-Habitat and Dubai Municipality, Dubai International Award for Best Practices to Improve the Living Environment:

In line with Sustainable Development Goal 11 – to make cities and communities inclusive, safe, resilient and sustainable – the award recognises significant contributions which:

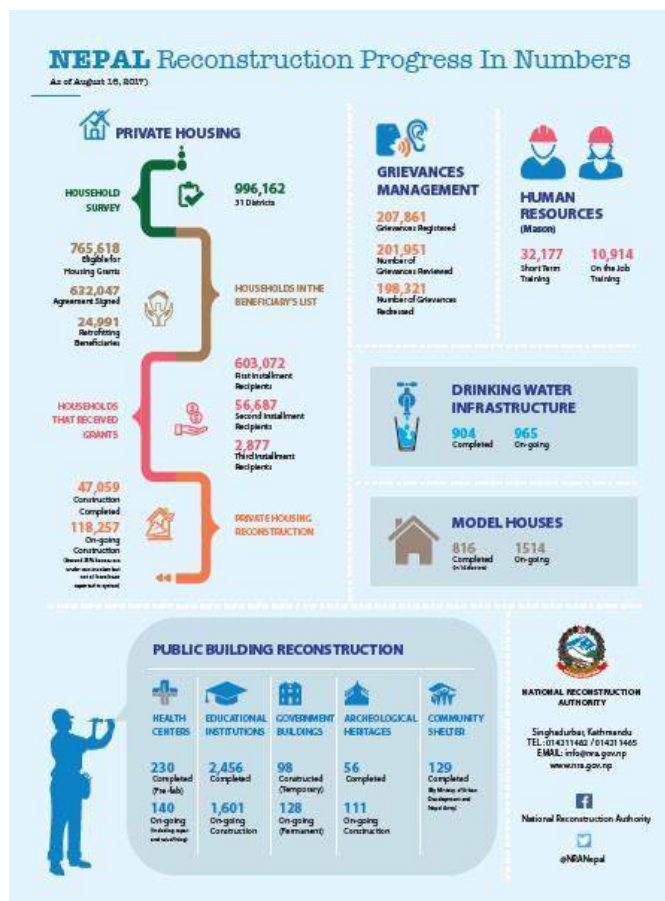
- Have a demonstrable and tangible impact on improving people’s quality of life;
- Are the result of effective partnerships between the public, private and civic sectors of society;
- Are socially, culturally, economically and environmentally sustainable.

The final deadline for submissions is 31 August 2017. For inquiries, please contact best.practices@unhabitat.org and to view past award winners and good practices, please visit [UN-Habitat’s Best Practices Database](#).

DOCUMENTS & PRODUCTS

Government of Nepal

[NRA Infographic, Progress Update 16 August](#)



HRRP

District Profiles: prepared based on R37 HRRP 4W data

- [Bhaktapur](#)
- [Dhading](#)
- [Dolakha](#)
- [Gorkha](#)
- [Kathmandu](#)
- [Kavrepalanchok](#)
- [Lalitpur](#)
- [Makwanpur](#)
- [Okhaldhunga](#)
- [Ramechhap](#)
- [Rasuwa](#)
- [Sindhuli](#)
- [Sindhupalchok](#)

[R37 HRRP 4W Data \(10 August 2017\)](#)

Housing Reconstruction Progress Maps: based on MoUD CLPIU inspection data as of 8 August.
[Partnership Agreement Signed](#)

- [1st Tranche Received](#)
- [Construction Started](#)
- [Compliance Rate – 2nd Tranche](#)
- [Compliance Rate – 3rd Tranche](#)
- [Construction Completed](#)

[Map of Prevalence of Building Typologies, based on CBS Survey Data](#)

Partners

[Milijuli Nepali, Episode 715](#): Heavy monsoon rain has added to the challenges faced by communities living in temporary shelters in earthquake-affected areas. This episode includes expert opinions on what can be done to purify drinking water to be safe from water borne diseases during monsoon and how to protect against snake bites. The episode also includes a visit to Bukhel, Lalitpur where the residents are rebuilding their homes.

[Promoting Safer Building Programme, Multidisciplinary Conference Report](#): the [Promoting Safer Building Programme](#) is a multidisciplinary research study being carried out by an alliance between the Overseas Development Institute (ODI), University College London-EPICentre (EPICentre), CARE International UK (CARE UK) and the British Geological Survey (BGS). The multidisciplinary conference held in London in July brought together field work carried out in the Philippines and Nepal. The Promoting Safer Building Programme team are now working on developing a peer reviewed Working Paper on research findings and implications for future practice, which will be shared later this year.

[Citizen Helpdesk Radio Programme Schedule](#): the programme ‘Sabal Samudaya’ is focused on foreign labour migration.



[Nepal Red Cross Society, First Aid Mobile App](#): provides information on how to provide basic first aid, including videos demonstrating treatments for a variety of potential accidents. The app is free to download and can be used offline.

[UNISDR DRR Terminology](#): aims to promote a common understanding and usage of disaster risk reduction concepts and to assist the disaster risk reduction efforts of authorities, practitioners and the public.

[A Toolbox: Planning Relocations to Protect People from Disasters and Environmental Change](#): developed by UNHCR, IOM, and Georgetown University this toolbox (which is intended to complement the [Guidance for Protecting People from Disasters and Environmental Change through Planned Relocations](#)) aims to support implementation of planned relocations and ensuring that best practices are followed.

[Media Digest](#) | [FAQ](#) | [Briefing Pack](#) | [Meeting & Events](#) | [4W](#) | [Housing Progress](#) | [Housing Typologies](#)