

WEEKLY BULLETIN

3 October 2017

Highlights

- Parliament on Sunday, 25th September, unanimously endorsed the [Disaster Risk Mitigation and Management Bill-2017](#), which replaces the Natural Calamity (Relief) Act-1982.
- [The World Bank has approved a \\$60-million loan](#) to support the second phase of the Enhanced Vocational Education and Training (EVENT) project in Nepal.

UPDATES & REQUESTS

National

[NRA 5W Reporting:](#) to date 144 out of 148 (97%) POs have reported to the NRA 5W. POs who have already reported should have received their login details for the online MIS project reporting system. The [user manual](#) provides full details on how to use this system and POs can contact Gaurab Pradhan (gaurab@hrrpnepal.org) if further information is required. Once the NRA 5W is fully up and running the HRRP 4W will be phased out.

[Disaster Management Act Passed by Cabinet:](#) Parliament on Sunday, 25th September, unanimously endorsed the Disaster Risk Mitigation and Management Bill-2017, which replaces the Natural Calamity (Relief) Act-1982. Unlike the existing Act, the new bill includes man-made disasters and envisages more powerful bodies to cope effectively with disasters hitting the country frequently.

[MoFALD CLPIU Enrolment Data, 25 September \(Nepali\)](#)

S.N.	Districts	No. of Eligible HHs	No. of beneficiaries added after grievances redressal	Total no. of beneficiaries	No. of HHs with grant agreement	No. of HHs received 1st tranche			No. of HHs received 2nd tranche			No. of HHs received 3rd tranche			No. of grievances registered	No. of grievances cleared	No. of beneficiaries eligible for retrofitting grant	
						GoN	I/NGO	Total	GoN	I/NGO	Total	GoN	I/NGO	Total				
						7	8	9	10	11	12							
Cluster 1- Highly affected 14 Districts																		
1	Sindhupalchok	78537	1380	79917	75304	70737	4455	75192	9711	1359	11070	130	438	568	14447	10838	376	
2	Okhaldhunga	19819	346	20165	18788	18485	505	18990	4382	215	4597	1322	67	1389	8019	7810	1643	
3	Nuwakot	65773	3516	69289	62825			63187			11020			1028	11503	11416	936	
4	Ramechhap	43609	1431	45040	42015	40716	1282	41998	7281	594	7875	332	394	726	14005	13972	2149	
5	Dolakha	51940	566	52506	49457	46614	1679	48293	10319	1148	11467	985	838	1823	24379	24379	637	
6	Gorkha	58503	2568	61071	54521	54627		54627	7483		7483	87		87	1164		2019	
7	Dhading	70581	5199	75780	66493	66131		66131	6305		6305			0	17044	16328	1494	
8	Kavrepalanchok	67731	4686	72417	64012	61598	2414	64012	6444	502	6946	15	213	228	23939	23486	2415	
9	Rasuwa	11236	393	11629	10700	8857	1023	9880	1177	581	1758	362	470	832	1418	1288	117	
10	Sindhuli	34269	19	34288	30223	29360	863	30223	3442	453	3895			182	182	28627	28627	2408
11	Makwanpur	30238	1579	31817	22697	20756	1348	22104	2991	825	3816			602	602	23961	23919	4150
12	Kathmandu	42500	2795	45295	36559	36140	107	36247	913		913			0	11292	11292	575	
13	Lalitpur	25892	1616	27508	22071	19513	710	20223	356	501	857		319	319	7004	5882	667	
14	Bhaktapur	26066	1578	27644	22175	21638		21638	559		559	19		19	6340	6330	280	
	Sub-total	626694	27672	654366	577840			572745			78561			7803	193142	185567	19866	
Cluster 2 - Less affected 17 Districts																		
1	Sankhuwasabha	1953		1953	1583	1201		1201			0						326	
2	Bhojpur	5749		5749	1754	1537		1537			0						453	
3	Dhankuta	2796		2796	2089	2089		2089			0						70	
4	Khotang	8443		8443	7200	7200		7200			0						253	
5	Solukhumbu	10794		10794	8095	514		514			0						456	
6	Chitwan	7335		7335	4000	1426		1426			0						593	
7	Nawalparasi	872		872	799	510		510			0				125		8	
8	Tanahu	13821		13821	5000	2350		2350			0						466	
9	Lamjung	13959		13959	11431	4495	200	4695		75	75				3005		539	
10	Baglung	2375		2375	1107	1109		1109			0						82	
11	Syangja	8549		8549	5342	2844		2844			0						567	
12	Palpa	4652		4652	3500	1946		1946			0						384	
13	Parbat	5269		5269	4138	4070		4070			0						417	
14	Gulmi	4144		4144	2877	2068		2068			0						195	
15	Kaski	6026		6026	1770	1770		1770			0						242	
16	Arghakhachi	1036		1036	850	591		591			0						67	
17	Myagdi	868		868	645	645		645			0						7	
	Sub-total	98641		98641	62180	36365	200	36565	0	75	75	0	0	0	3130	0	5125	
	Total	725335	27672	753007	640020	36365	200	609310	0	75	78636	0	0	7803	196272	185567	24991	

Districts

HRRP District Coordination Team Dhading, Weekly District Report, 14-21 September 2017



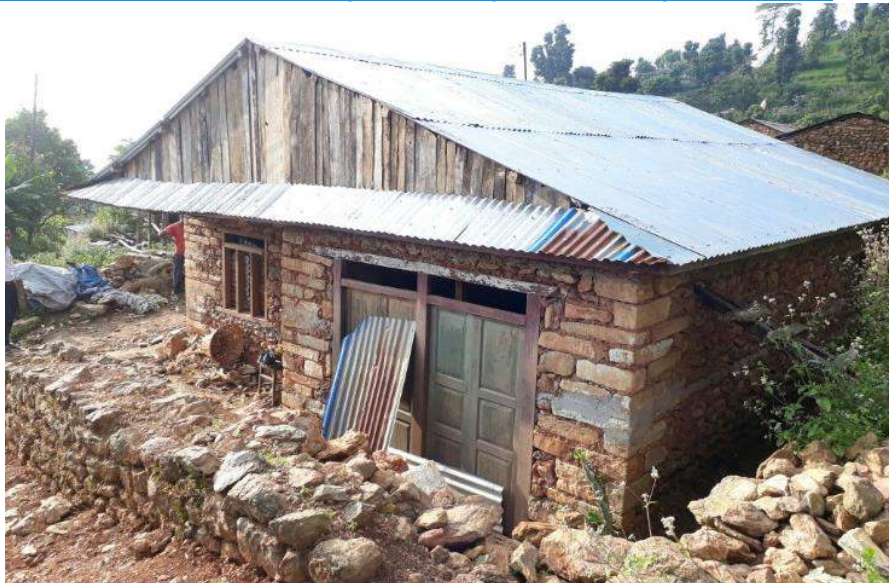
Ward No. 6, Gajuri Rural Municipality, Dhading: the homeowner said that the cost of constructing their home was 2.5 lakhs NPRs, not including the labour costs as they contributed the labour themselves.

[HRRP District Coordination Team Dolakha, Weekly District Report, 14-21 September 2017](#)



Bigu Gaupalika 3 (Bulung VDC): Timber Seasoning, generally it is done for 1 year in the locality.

[HRRP District Coordination Team Gorkha, Weekly District Report, 14-21 September 2017](#)



Gandaki Rural Municipality, Bhumlichowk VDC: this house has been constructed using stone masonry with mud mortar but has not been approved for the second tranche as banding has not been provided as per compliance requirements. This is a female headed household, and after discussion with the DLPIU engineers it was agreed that the second tranche will be released as the house is compliant to plinth level and then the home owner will use this money to carry out the required corrections as per the guidance from the DLPIU engineers.

Requests for Partner Support

[Female Masons Questionnaire](#): CFP are currently conducting semi-structured interviews, using this [questionnaire](#), across earthquake affected districts to try to better understand the engagement of women in masons training, and

how they can engage in masonry work post-training. We would be extremely grateful to partners for any information around any of these questions that can be shared. The compiled information will be used to identify steps that can be taken to strengthen women's engagement in masonry work and in the overall recovery.

[Save the Date, International Conference, "Risk2Resilience - a Collective Journey for Safer Future"](#): the conference will be dedicated to experiences of earthquake risk management in Nepal and will take place in Kathmandu from 18-20 June 2018. The event will mark the occasion of the 25th Anniversary of NSET.

[Job Opening, Regional Liaison Assistant, CFP / UN RCO](#): closing date for applications is 14 October.

[State of the Humanitarian System \(SOHS\) Survey](#): the SOHS takes stock of how the humanitarian system is performing and a new edition of the report will be published in late 2018. This survey is designed to collect input from humanitarians on the ground and host governments.

[Professionals in Humanitarian Assistance and Protection \(PHAP\), Call for Experts to Help Develop Certifications in MEAL, Needs Assessment, and Cash Transfer Programming](#)

[GSMA Disaster Response Innovation Fund, Applications Open](#): the fund can provide funding to help you to test, or bring to scale mobile technology to assist and empower individuals or communities affected by humanitarian emergencies, or to strengthen prevention, preparedness and response in disaster contexts. Funding of up to £300,000 per project is available, as well as promotion and networking opportunities. Applicants must be a collaboration consisting of two or more Mobile Network Operators, NGOs, humanitarian agencies, national emergency/environmental bodies and/or private sector companies. Concept notes must be submitted by 13 October 2017 at 5.00pm GMT.

[National Tourism Board & DFID Nepal, World Tourism Day Photo Competition:](#)



DOCUMENTS & PRODUCTS

Government of Nepal

[Repair and Retrofitting Manual for Masonry Structures](#)

[Repair and Retrofitting Manual for RCC Structures](#)

HRRP

Housing Reconstruction Progress Maps: based on MoUD CLPIU inspection data as of 5 September.

[Partnership Agreement Signed between HH and GoN](#)

[1st Tranche Received](#)

[Construction Started](#) (the numbers on the VDCs represent the number of socio-technical assistance activities being implemented there by a Partner Organisation(s))

[Compliance Rate – 2nd Tranche](#) (the numbers on the VDCs represent the number of socio-technical assistance activities being implemented there by a Partner Organisation(s))

[Compliance Rate – 3rd Tranche](#) (the numbers on the VDCs represent the number of socio-technical assistance activities being implemented there by a Partner Organisation(s))

[Construction Completed](#) (the numbers on the VDCs represent the number of socio-technical assistance activities being implemented there by a Partner Organisation(s))

Technical Assistance Coverage Maps: based on the latest round of HRRP 4W data.

[Coverage of 7 Technical Assistance Activities](#)

[Areas with no Technical Assistance with Damage](#)

[Overlay](#)

[Door to Door Technical Assistance](#)

[Helpdesks / Technical Resource Centres](#)

[Masons Short Training Coverage](#)

[Masons Vocational Training Coverage](#)

[Community and Household Orientations](#)

[Demonstration Construction](#)

Partners

[Milijuli Nepali, Episode 753:](#) What can you learn from your neighbours about building a new house? What kind of material can be used and what kind of information do you need on engineering? In this episode, recorded in Sindupalchowk, our presenters interact with people visiting their neighbourhood to learn building tips.

[Baliyo Ghar TV Programme: Episode 70](#) is now available on YouTube. Episode 70 focuses on retrofitting and is shown on Kantipur TV today at 19:30 and on News24, Image, and Avenues for a week.

[Quality and Access Over Quantity in TVET, Report:](#) this preliminary report, prepared as part of the UNDP Nepal's Support to Knowledge and Life-long Learning Skills (SKILLS) Programme, was presented to development partners this week. The report found that current provisions of technical and vocational education and training (TVET) programmes in Nepal are largely uncoordinated and unplanned, and are being provided without giving due thought to the relevance of the skills gained to the trainees and the community where they live, as well as to employment prospects overall. They also found that most programmes were also concentrated in urban areas, rendering access limited for people from rural parts of the country.

[Humanitarian standards now available on mobile devices:](#) The new Humanitarian Standards Partnership application provides the Sphere Handbook and other humanitarian sector's flagship standards in a single, free-of-charge app. Designed for field practitioners providing humanitarian aid in emergencies, the app works on- and off-line on mobile phones and tablets. The app can be downloaded in [android](#) and [ios](#) devices.

[UNDP Asia Pacific, Gender Equality Dispatch:](#) this is the first issue of a new Gender Equality newsletter from the UNDP Bangkok Regional Hub. The newsletter will be sent out twice a year.

[Air Pollution in Kathmandu, breathelife2030.org](http://breathelife2030.org)



[Health Minister Launches Mobile App to Promote Adolescent Sexual and Reproductive Health in Nepal, UNFPA Press Release](#): the app, called Khulduli (curiosity), aims to promote sexual and reproductive health and rights of adolescents in Nepal by empowering them with the right information about their health and helping them adopt a healthy lifestyle. The app can be downloaded from the [google play store](#) for free.

[World Trade Report 2017, World Trade Organisation](#)

[Asian Development Outlook \(ADO\) 2017 Update: Sustaining Development Through Public-Private Partnership, Asian Development Bank](#)

[Media Digest](#) | [FAQ](#) | [Briefing Pack](#) | [Meeting & Events](#) | [4W](#) | [Housing Progress](#) | [Housing Typologies](#)